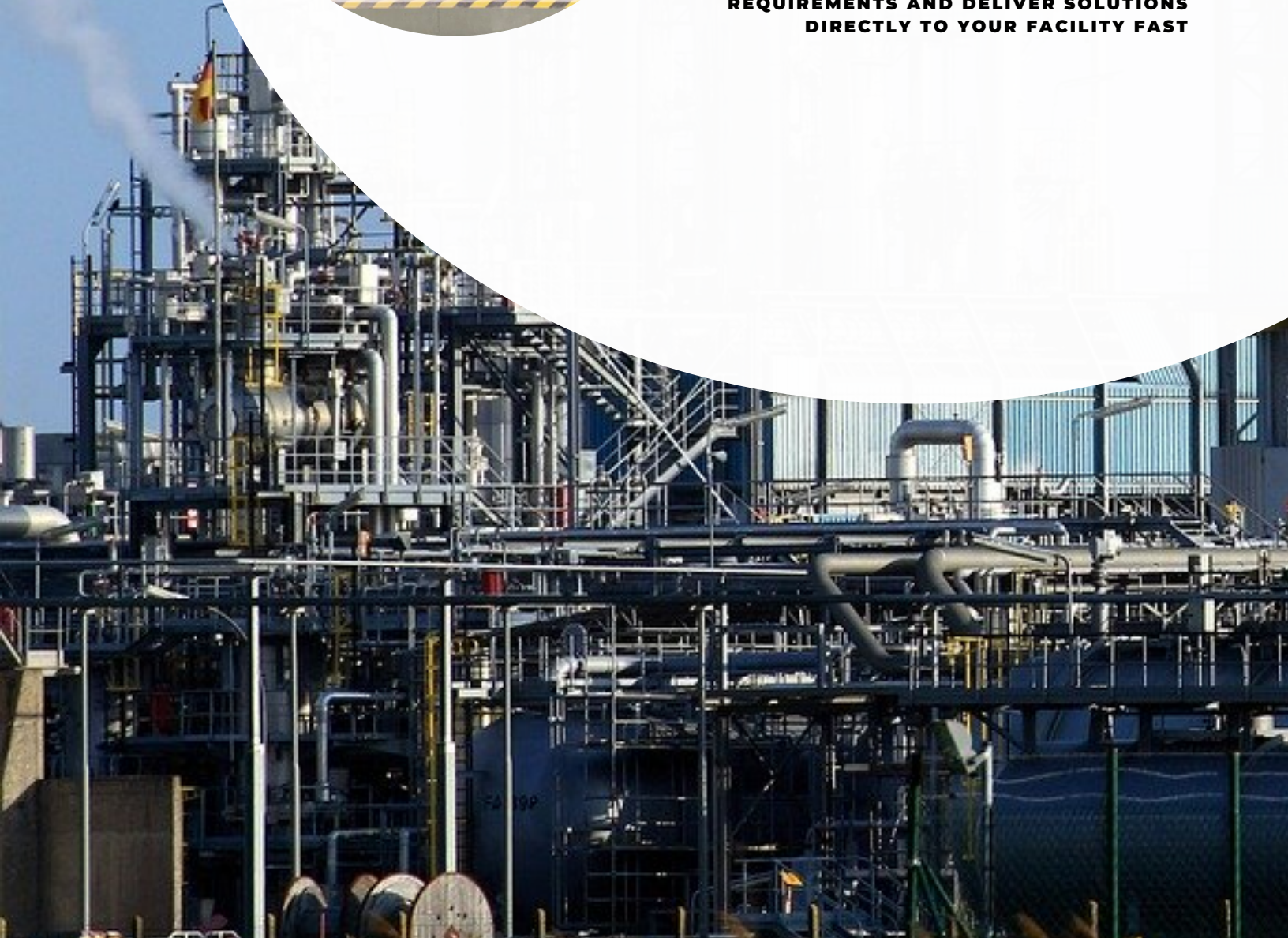


**TORQUE ENGINEERING**



# INNOVATIVE PUMPING SOLUTION

**WE CAN MAKE COMPLETELY CUSTOMIZED  
PUMPS TO MEET YOUR  
REQUIREMENTS AND DELIVER SOLUTIONS  
DIRECTLY TO YOUR FACILITY FAST**





**TORQUE ENGINEERING**

## ABOUT COMPANY

Torque engineering services is a multi-disciplinary organization specialized in the engineering field, dedicated to serving the demand of various industries. Apart from business our main focus to give proper service support to our esteemed customers. We will provide timely services & you can entirely rely on us.

Our team has experienced over 2 decades of exposure in various industries and our robust network developed over the years. We cater to all kinds of industrial equipment needs as best fit under one roof. In a city filled with many choices, we supply the best products in India.

Torque engineering is committed to global excellence with our existing product range and unparalleled hydraulic performance coverage of metallic and non-metallic pumps to support core market application. We are registered vendor with Oil and Gas, Petrochemical, Pharmaceutical, Power, Nuclear, Chemical, Fertilizer, Defence etc. sectors.





# TORQUE ENGINEERING

## WHAT WE DO?

Torque Engineering is the leading distributor of commendable and premium quality array of Chemical Process metallic and non metallic pumps, API and non API pumps, centrifugal pumps, Self Priming, multi stage, magnetic seal less pumps, vertical gland less pump and submersible pump. Torque was started by a team of Technocrats having vast experience in Pump Industry. The Innovative Products have put Torque in front role for handling aggressive Media. Most of the products supplied by Torque are custom designed for specific applications.

Torque covers a full range of metallic & non-metallic process pumps which comprises of various transfer pumps and process pumps. These pumps are used for applications such a transfer of various kinds of acids, alkalies & solvents and handling various corrosive & toxic chemicals.

## INDUSTRIES SERVED

- Chemical
- Pharmaceutical
- Steel Plant
- Textile
- Fertilizer
- Cement
- Pulp & Paper
- Dyes & Intermediates
- Liquid Waste Processing
- ETP
- Suger & Food
- Refinery
- Bulk Drug Etc.
- Pesticides
- Primary Metal
- Brewing



# HORIZON CHEMICAL PROCESS PUMPS



## CHARACTERISTICS AND DESIGN FEATURES

- HI design (OH1), dimensionally compliant with the ANSI / ASME B73.1 standard
- Horizontal, overhung, single stage, end suction centrifugal pump
- Open impeller, provides hydraulic balance reducing axial thrust
- Backpull-out design for ease of maintenance
- Modular design concept
- Available in a wide range of metallurgies to allow operation with a broad variety of liquids

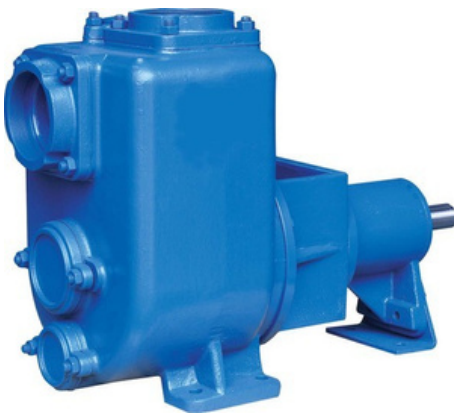
## OPERATING LIMITS

Capacity	up to 120 m <sup>3</sup> /Hr
Head	up to 95 m
Temperature	up to 175°C

## APPLICATIONS

- Chemical
- Pharmaceutical
- Auxiliary services in power plants
- General industry
- Food processing
- Water and wastewater treatment

# SELF PRIMING PUMP



## CHARACTERISTICS AND DESIGN FEATURES

- HI design (OH1A)
- Self-priming process pump
- Handles solids up to 3" (76 mm) in diameter
- Removable cover plate allows for easy access to impeller and seal to facilitate maintenance
- Availability of mounting above the liquid being pumped, maximum lift up to 25 ft. (7.6m)
- Available with or without trailer
- Cast iron as standard material (other material on request)

## OPERATING LIMITS

Capacity	Up to 73 LPS
Head	up to 35 Mtrs.

## FEATURES

- Able to handle suspended soft particles
- Automatic air release during priming
- Flatter Efficiency Curve
- Replacable wearing parts

## APPLICATIONS

Waste handling and sewage applications, it can handle clear liquids or with solids:

- Paper mills
- Food processing
- Wineries
- Steel Industry
- Wastewater treatment
- Mine dewatering and groundwater control

# VERTICAL SUMP PUMP



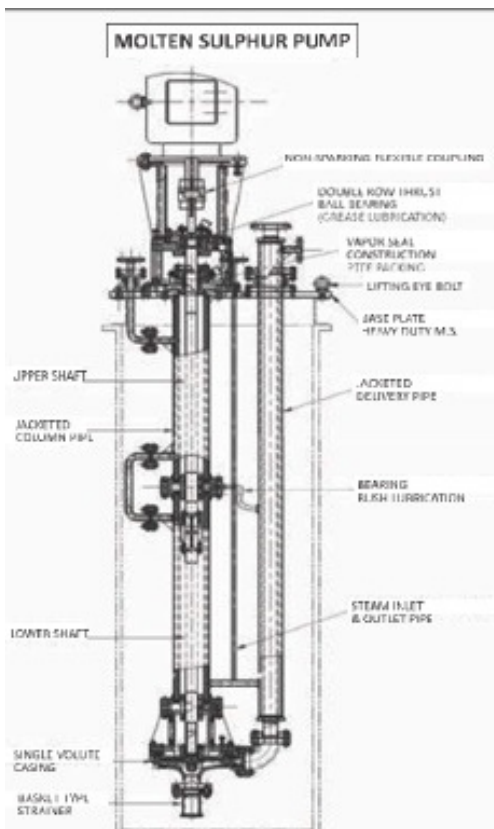
## CHARACTERISTICS AND DESIGN FEATURES

- HI design and API 610 latest edition (VS4) constructions available
- Semi-open impeller for clean water applications and enclosed impeller for solidshandling (non-clog model)
- Canhandle water with solids up to 4" (102 mm) in diameter(non-clog)
- Sumpmount or tank mount available
- Sump depth up to 20 ft (5 m)
- Castiron as standard material for the VSP model (other materials on request) for the VSP-Chem materialsare according to API 610

## OPERATING LIMITS

Capacity	up to 150 m <sup>3</sup> /hr
Head	up to 15 m
Temperature	up to 200 °C

# MOLTEN SULPHUR PUMP



## CHARACTERISTICS AND DESIGN FEATURES

Super flow SVP Vertical Sump pumps are specially designed for Long life and trouble free performance. The Special design for molten sulfur incorporates bearing intermediate bearing made of special Teflon compound and lubrication by molten sulfur injected through a line tapped from discharge pipe. Line is adequately insulated/ Jacketed to ensure lubricating sulfur in moltenstate.

Pump shafts are designed to ensure that the first critical speed exceed running speed by least 10% to ensure that the vibrations are well within limits and resonance avoided.

# MULTI STAGE PUMP



DESIGN STANDARD:	Leakproof
CAPACITY:	300 m <sup>3</sup> /hr
HEAD:	Up to 400m
PRESSURE:	40 bar
TEMPERATURE:	Up to 175°C
MAX OPERATING SPEED:	3600 rpm
FLANGE RATING:	Ansi B16.5 class 300/900
MATERIAL (CASING / IMPELLER):	CS, SS, Hast alloy and other metallurgy on request

## RECOMMENDED APPLICATIONS:



# GSD / GSD-C



## CHARACTERISTICS AND DESIGN FEATURES

These pumps feature a rugged construction using the highest quality materials to ensure reliable performance and excellent service life. These pumps are heavy duty and are designed to handle a wide range of slurries and abrasive particles in submersible applications in mining and industry.

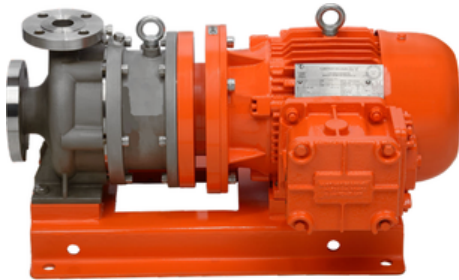
## APPLICATIONS

Clear liquids or fluids with small solids in suspension:

- Water supply systems
- Agricultural irrigation
- Construction dewatering
- Slurry transfer

# METALLIC AND NON METALLIC SEAL LESS PUMPS

## CHARACTERISTICS AND DESIGN FEATURES



- Single Stage, Horizontal Centrifugal Pump.
- Hydraulic Performance and Dimensions according to DIN EN ISO 2858
- Technical design based on DIN EN ISO 15783
- Permanent Magnet Drive
- Maintenance Free
- Separation of Liquid Chamber to Atmosphere by Means of Isolation Shell
- Slipless Power Transfer
- Materials : Steel, Stainless Steel, Nickel Based Materials
- Close Coupled Block Design
- Hydraulically balanced impeller for minimum bearing loads
- Product-Lubricated Journal Bearings; made of Silicon Carbide (SSiC) or Customized Materials

## OPERATING LIMITS

Flow Rate	max. 100m <sup>3</sup> /h
Delivery Head	max. 100 metre
Pressure Rating	Class 150
Temperatures	-35°C to +250°C
Kinematic viscosities	0.5 to 350 mm <sup>2</sup> /s

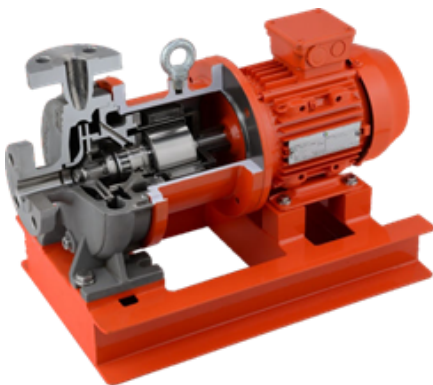
## APPLICATIONS

- Chemical Processing : basic and fine chemicals
- Agrochemicals, speciality chemicals
- Pharmaceuticals
- Biotechnology processing
- Food and beverage
- Pulp and Paper
- Refinery & Petrochemicals
- Metal processing
- Tanks storage

## Casing & Impeller Materials

## CHARACTERISTICS AND DESIGN FEATURES

CStainless steel SS 316, SS 316L, SS 304, SS 304L Other materials duplex alloys, nickel-base alloys (e.g. Hastelloy®),



## OPERATING LIMITS

Working Principle	Radial flow pump
Stages	Single stage
Priming Method	Flooded suction
Sealing System	Magnetic coupling
Standards	DIN EN ISO 2858
Standards	DIN EN ISO 15783

ALAX

2014/34/EU

# POLYPROPYLENE CENTRIFUGAL PUMPS



DESIGN STANDARD : ISO 5199/2858

RECOMMENDED APPLICATIONS:



CAPACITY : 250 m<sup>3</sup>/hr

HEAD : Up to 60m

PRESSURE : 6 bar

TEMPERATURE : Up to 80°C

MAX OPERATING SPEED : 3600 rpm

FLANGE RATING : ANSI B16.5 class 150

MATERIAL (CASING / IMPELLER) : PP/GFRPP/UHMWPE

# PVDF, FEP , PFA LINED CENTRIFUGAL PUMPS



DESIGN STANDARD : ISO 5199/2858

RECOMMENDED APPLICATIONS:



CAPACITY : 400 m<sup>3</sup>/hr

HEAD : Up to 100m

PRESSURE : 16 bar

TEMPERATURE : Up to 230°C

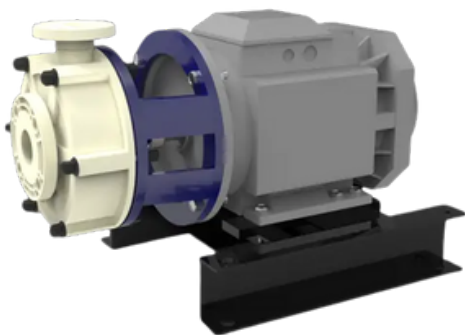
MAX OPERATING SPEED : 3600 rpm

FLANGE RATING : ANSI B16.5 class 150

MATERIAL (CASING / IMPELLER) : PVDF, FEP, PFA

OPTIONS : Cooling Jacket

# PP MONO BLOCK PUMPS



RECOMMENDED APPLICATIONS:



DESIGN STANDARD : ISO 5199/2858, Leakproof

CAPACITY : 80 m<sup>3</sup>/hr

HEAD : Up to 60m

PRESSURE : 6 bar

TEMPERATURE : Up to 80°C

MAX OPERATING SPEED : 3600 rpm

FLANGE RATING : ANSI B16.5 class 150

MATERIAL (CASING / IMPELLER) : PP/PVDF/GFRPP/UHMWPE



# VERTICAL GLAND LESS PUMP



## CHARACTERISTICS AND DESIGN FEATURES

It can run dry, without any substantial damage.

- Leak proof performance as eliminating usage of Mech. Seal / Gland Packing.
- Zero Maintenance.
- Low Inventory Cost.
- Compact Design as per ISO 2858 (DIN 24256).
- The only substitute for Submerged / Submersible/ Self priming Horizontal Pumps.
- Reduction in down time production losses.

## APPLICATIONS

Superiority of UHMW-PE (Ultra High Molecular Weight - Polyethylene) over conventional materials.

- It exhibits exceptional wear resistance comparable to Ni-Hard, HV-9A, Alloy-20, Hastelloy etc.
- It wears PP GFP, GRP etc for pumping corrosive & abrasive slurry is used for almost all Acids, Solvents and Alkalies.

# DESIGN AND DEVELOPMENT OF PUMPS SPARES



- We wish to introduce, We are the Pioneer in design ,development & manufacturing, supplying of imported & indian pump Spare & other equipment spares .
- We are experience to manufacture various Metallurgical specification Confirming to IS, IS, ASTM, JIS, AFNOR, and BS Standards like graded Cast Iron, CA 15,CA 40,LCB,WCB,CF8 (SS-304), CF8M (SS-316), CF3M (SS-316L), CG8M (SS-317), CG3M (SS-317L), SS 2324,ASTM A 890 Grades like ,CD4MCUN ALLOY-20, HAST ALLOY-C, B, Hast Alloy G 30,Nihard-IV,Hi-Chrome(550BHN) etc .

# STANDARD & APPROVALS



ATEX 2014/34/EU





# OUR FEW PRESTIGIOUS CUSTOMERS



# Get in Touch

## Contact Us



9444148868



torqueengg@gmail.com



[www.torqueengineering.in](http://www.torqueengineering.in)



No 52, Jeeva main street  
puzhal Chennai - 600066



No D 14, CMDA Truck Terminal,  
Madhavaram, Chennai - 600110